

OCTOBER 2015

Better  
Homes  
and Gardens

SEEN  
ON  
BHG  
TV



Shopping around for show-stopping lights? Take your lead from the main strips of Vegas and Broadway, baby! Marquee lighting is a great way to add instant style cred to your home. Hit the shops to pick up a dazzler in a flash or make your own, like here, for a vintage-look finish and full bragging rights.

# LIGHT *the way!*

Point your interior lighting  
in the right direction





# The twinkle factor of a marquee light brings appeal to any room

## MARQUEE LIGHT

### Gather your supplies

- MDF 900 x 600 x 9mm
- Balsa 75 x 915 x 3mm
- Balsa 75 x 915 x 1.5mm
- Dulux 1 Step Primer, Sealer & Undercoat
- Dulux Design Rust Base Paint (Step 1)
- Dulux Design Rust Solution (Step 2)

### You'll also need

Pencil; metal ruler; scissors; face mask; protective goggles; jigsaw; drill; hole saw (we used 2.54cm dia); fine-grit sandpaper; sanding block; utility knife; cutting mat; hammer; flat-head tacks; masking tape; drop sheet; painting tools; string of 10 fairy lights with plastic bulb casing

### Here's how

**STEP 1** To make template, draw up a 50mm grid on a large sheet of paper. Transfer Marquee Light Diagram (see next page) to grid using pencil and ruler. Cut out arrow shape with scissors.

**STEP 2** Lay template on 1 face of MDF and trace around arrow shape with pencil. Using pencil, pierce a hole in centre of each circle on template, indicating light placements. Mark these positions on MDF also.

**STEP 3** Use metal ruler and pencil to straighten up traced lines of arrow shape.

**STEP 4** Wearing face mask and goggles, use jigsaw to cut around marked arrow shape.

**STEP 5** Use drill fitted with hole saw to cut holes for lights.

**STEP 6** Use fine-grit sandpaper wrapped around sanding block to lightly rub cut edges. Keep sandpaper square to edges to prevent rounding the edges. Wipe away dust.

**STEP 7** To apply balsa you need to work 1 edge at a time. Use 3mm balsa on all edges other than edge with inside curve. On this edge, use a double layer of 1.5mm balsa to handle the curve (see Tip, next page). Measure each length of balsa against side you are working on, mark up, then cut all pieces to size with utility knife along metal ruler on cutting mat.

**STEP 8** Starting with point of arrow, apply glue to 1 edge of MDF, then tack 1 end of corresponding piece of balsa in place, centred to MDF. Press down balsa and hammer in more flat-head tacks along edge, keeping tacks about 5cm apart. Repeat to box out all remaining edges of MDF with balsa, including curves. It's okay to be a little rough as it's all part of the vintage look charm. Apply tape on edges and joins of balsa.

steps



STEP 3



STEP 4



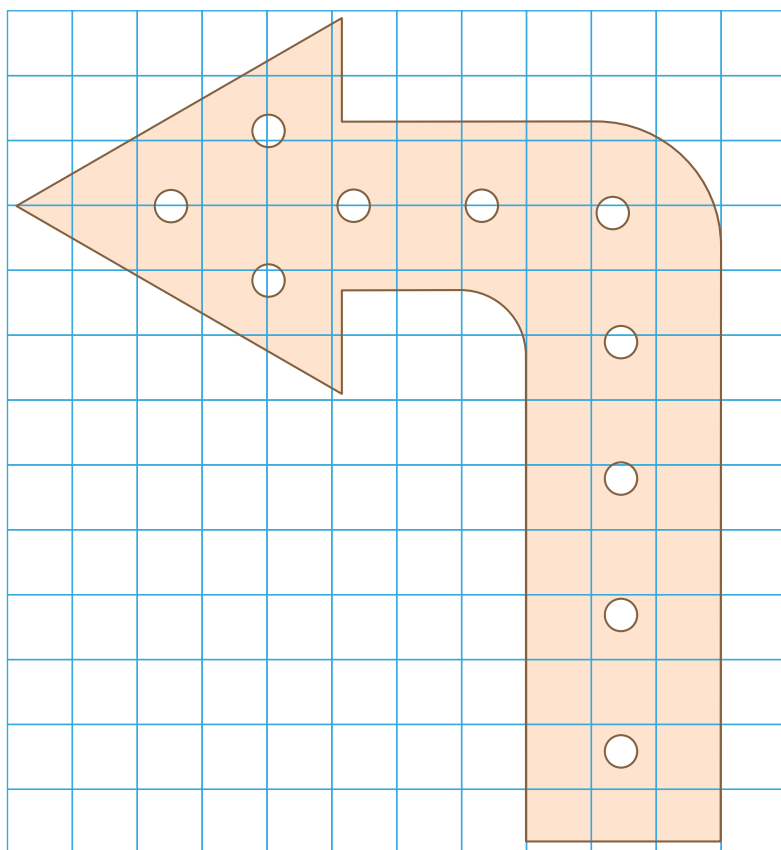
STEP 5



STEP 6



STEP 8



Marquee Light Diagram

50mm grid

**STEP 9** Lay drop sheet on a work surface. Place arrow on drop sheet and paint all surfaces with Dulux 1 Step Primer, Sealer & Undercoat. Allow to dry.

**STEP 10** Paint all surfaces of arrow in 2 coats of Dulux Design Rust Base Paint (Step 1). Allow to dry after each coat.

**STEP 11** Paint all surfaces of arrow in 2 coats of Dulux Design Rust Solution (Step 2). Allow to

dry after each coat. Allow final coat to dry for 12 hours.

**STEP 12** Fit plastic bulb covers into holes at front of arrow.

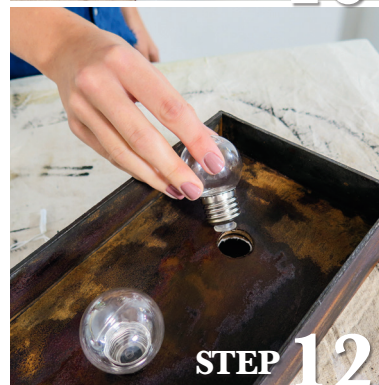
**STEP 13** Plug fairy lights into reverse side of bulb covers at back of arrow.

*Tip* To make the balsa wood more flexible, rest it in a bucket of water for a few minutes before bending it.

### STOCKISTS

**Project supplies:** Customwood standard MDF panel 900 x 600 x 9mm, \$9.25. Boyle balsa in assorted sizes. Balsa wood PVA glue, **Bunnings (03) 8831 9777, [bunnings.com.au](http://bunnings.com.au)** Dulux 1 Step water-based Primer, Sealer & Undercoat. Dulux Design Rust Base Paint (Step 1) 500ml. Dulux Design Rust Solution (Step 2) 500ml, **Dulux 13 25 25, [dulux.com.au](http://dulux.com.au)** Fairy lights, string of 10 with plastic bulb casing, \$29, **Freedom Furniture 1300 135 588, [freedom.com.au](http://freedom.com.au)**

Prices are approximate and intended as a guide only.



*Finishing off with a rust-paint look creates an aged patina effect*