

OCTOBER 2015

Better
Homes
and Gardens.

SEEN
ON
BH&G
TV **7**

picture *this*

Learn to print your own fabric with a
fab transfer technique using the sun



1. Using the Lumi Inkodye kit, print your chosen fabric with favourite snaps of ancient ruins taken on your overseas holiday, or use royalty-free pics found online. Then ask an upholsterer to cover a vintage chair with your handiwork.

Whether it's fabric to be used for upholstery or plain cushion covers, this pattern sheet takes you through all you need to know to print images on fabric using Lumi Inkodye products. Once you've had a few goes, the possibilities are endless! For more info and project inspiration visit inkodye.com



2. Take a funky cat snap and print a fab cushion cover using the photo. It's also a great gift idea!

TRANSFERRING IMAGES TO FABRIC

Gather your supplies

- Acetate or Lumi Inkofilm transparency sheets
- Cotton fabric in White
- Lumi Inkodye roller
- Lumi Inkodye in colour of choice
- Lumi Inkowash detergent

You'll also need

Iron; pencil; thick board; paper towel; gaffer tape

Notes 1. We used cotton fabric, however, you can use any natural fibre you wish, including wool, silk and leather. **2.** Look for royalty free images online or use your own photos. An image with bold shapes and good contrast will give you the best results. **3.** Refer to Lumi product directions throughout this project for more handy tips and tricks.

Here's how

Making the print

STEP 1 To get started, you need a negative black and white print copied onto acetate or Lumi Inkofilm transparency sheets. You can do this on a photocopier that allows you to change the print to negative by following settings and then feeding acetate through machine. Alternatively, you can make the changes on your computer using image software such as Adobe Photoshop and print at home, or ask a printing store such as Officeworks to do it for you.

Tip For a more intense contrast in your final image, make 2 identical copies of your negative on acetate or transparency sheets.

Printing the fabric

STEP 2 Water-wash, dry and iron your fabric so there are no creases.

STEP 3 Determine desired position of print on fabric and lightly mark with pencil. Place thick board under fabric to prevent colour bleeding through.

Tip If printing on a T-shirt or cushion cover, place thick board inside opening rather than under fabric.

STEP 4 Working in a well-ventilated area out of direct sunlight, use Lumi Inkodye roller to apply a thin layer of chosen Inkodye colour to area of fabric to be printed. Use paper towel to blot off any excess product. Your fabric should be damp, not wet. If fabric is too wet it may turn out blotchy.

STEP 5 Place acetate or transparency sheet negative on top of dye and fix in position with gaffer tape. If you've printed 2 copies of negative, stack 1 on top of other and tape them neatly into position. This will give you the greatest contrast.

STEP 6 Move fabric and acetate assembly to a naturally well-lit area. Expect to leave assembly in full sunlight for 12 minutes or in overcast light for 20-30 minutes. The clear spaces in your acetate should develop into solid colour on your fabric.

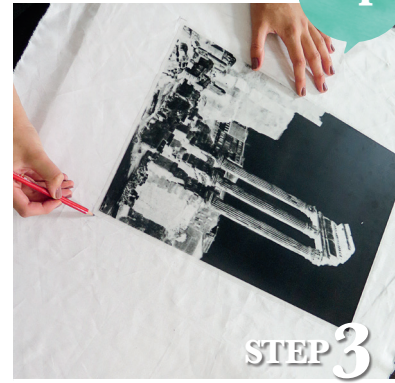
Finishing up

STEP 7 Once image is developed, take fabric assembly to a dim spot, away from direct sunlight or UV. Peel off negative to reveal your print.

Tip Remove tape and wipe ink off acetate or transparency with damp paper towel to remove residue, then store flat to reuse for more prints.

STEP 8 Using Lumi Inkowash detergent, machine wash your prints on the 'Hot/Cold' setting of your washing machine. For best results, wash your prints twice using Inkowash detergent. Hang to dry and use as you please.

steps



STEP 3



STEP 4



STEP 5



STEP 8

STOCKISTS

Lumi Inkodye 237ml; Lumi Inkodye detergent; Lumi roller to suit Inkodye bottle, **Eckersley's** eckersleys.com.au